



Your **definitive** source  
for quality pre-owned  
equipment.

**Artisan Technology Group**

(217) 352-9330 | [sales@artisanng.com](mailto:sales@artisanng.com) | [artisanng.com](http://artisanng.com)

**Full-service, independent repair center**

with experienced engineers and technicians on staff.

**We buy your excess, underutilized, and idle equipment**

along with credit for buybacks and trade-ins.

**Custom engineering**

so your equipment works exactly as you specify.

- Critical and expedited services
- In stock / Ready-to-ship
- Leasing / Rentals / Demos
- ITAR-certified secure asset solutions

**Expert team | Trust guarantee | 100% satisfaction**

All trademarks, brand names, and brands appearing herein are the property of their respective owners.

Find the Vantec UGT-PC345 at our website: ***Click HERE***



# **USB 3.0 4-Port PCI Express Card**

## **User Manual**

**Model: UGT-PC345**

**All brand names and trademarks are properties of their respective owners**

**[www.vantecusa.com](http://www.vantecusa.com)**

# Contents:

Chapter 1: Introduction.....	3
1.1 Product Introduction .....	3
1.2 Features.....	4
1.3 System Requirements .....	5
1.4 Package Contents.....	5
Chapter 2: Getting Started .....	5
2.1 Hardware Installation .....	5
2.2 Driver Installation.....	6
2.3 Hardware Verify.....	7
2.4 Driver Uninstall .....	9
Chapter 3: Troubleshooting Tips .....	10

# Chapter 1: Introduction

## ***1.1 Product Introduction***

Super-Speed USB 3.0 interface is the next revolution in I/O interconnect standards that will deliver the bandwidth and features required by PCs, consumer electronics and communications devices. With 10 times faster throughput than USB 2.0 standard and backward compatible with current USB device features, USB 3.0 interface will be the trend of the IT industries.

This board is a 4-port Super-Speed USB 3.0 PCI Express card. It is compliant with the PCI Express Generation 2 specification for host PC system. It works up to 5 Gbps for data transfer when connecting to USB 3.0 compliant peripherals, while maintaining compatibility with existing USB peripheral devices.

This board supports USB 3.0 High-Speed device and backward compatible with current USB 2.0 High-Speed and USB 1.1 Full-Speed device. It is an ideal choice for external storage devices, MP3 players, external DVD Writer, Card Readers, digital cameras, webcams, networking, video devices, and all other USB devices.

## **1.2 Features**

- Fully compliant with PCI Express Base Specification Revision 2.0
- Support USB Battery Charging Specification Revision 1.2
- Single-lane (x1) PCI Express throughput rates up to 5 Gbps
- Compliant with Universal Serial Bus 3.0 specification Revision 1.0
- Supports simultaneous operation of multiple USB 3.0, USB 2.0 and USB 1.1 devices
- Supports the following speed data rates as follows:  
Low-speed (1.5Mbps) / Full-speed (12Mbps) / High-speed (480Mbps) / Super-speed (5Gbps)
- Compliant with Intel's eXtensible Host Controller Interface (xHCI) Specification Revision 1.0
- Supports 4 downstream ports for all speeds
- Built-in 4-pin power connector for the power requirement of the USB 3.0 port
- Hot-swapping feature allows you to connect/disconnect devices without powering down the system
- Support Windows® XP/Vista/7/8 (32/64 bit)

## ***1.3 System Requirements***

- Windows® XP/Vista/7/8 (32/64 bit)
- One available PCI Express slot (Recommend PCI Express 2.0)

## ***1.4 Package Contents***

- 1 x USB 3.0 4-Port PCI Express Card
- 1 x Driver CD
- 1 x User Manual
- 1 x 4pin Power cable

# Chapter 2: Getting Started

## ***2.1 Hardware Installation***

1. Turn off the power to your computer.
2. Unplug the power cord and remove your computer's cover.
3. Remove the screw and the slot bracket from an available PCIe slot.
4. To install the card, carefully align the card's bus connector with

the selected PCIe slot on the motherboard. Push the board down firmly.

5. Replace the slot bracket's holding screw to secure the card.
6. Replace the computer cover and reconnect the power cord.

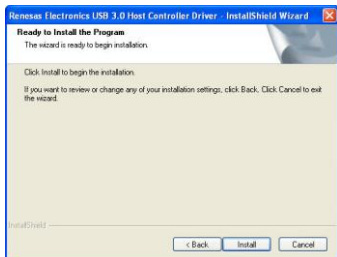
## ***2.2 Driver Installation***

1. Insert the provided CD into your CD-ROM drive.
2. At the Windows desktop click **Start**, then **Run**.
3. Type **D:\UGT-PC345\Setup.exe**, and then click **OK**. (Change D: to match your CD-ROM drive letter)
4. Click "**Next**" to continue.  
Please check accept license agreement box, and click "**Next**" to continue.



5. Click **“Install”** to continue.

Click **“Finish”** to end of the driver installation steps.



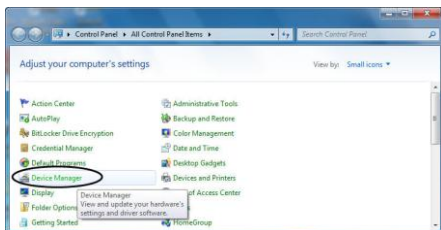
## 2.3 Hardware Verify

1. Click on the **“Device Manager”** tab in the Windows Control



Panel.

**Start > Control Panel > Device Manager**



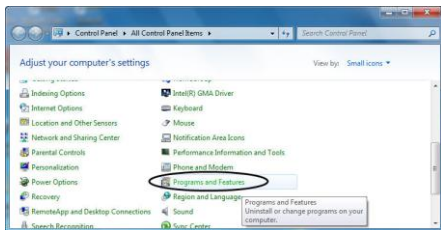
2. Look for the entry **“Universal Serial Bus controllers”** category and double click on the category and you will see **“Renesas Electronics USB 3.0 Host Controller”** and **“Renesas Electronics USB 3.0 Root Hub”** in the Device Manager.



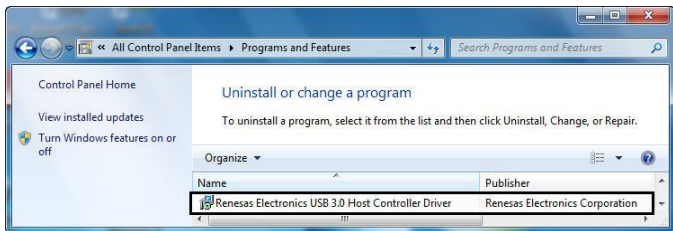
## 2.4 Driver Uninstall

1. Click on the **“Programs and Features”** tab in the Windows Control Panel.

**Start > Control Panel > Programs and Features**



2. Double click **“Uninstall or change a program”** page, and double click **“Renesas Electronics USB 3.0 Host Controller Driver”** to start the uninstall process.

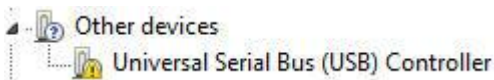


## Chapter 3: Troubleshooting Tips

- If card and devices connected to the computer do not seem to be working properly, please perform below basic troubleshooting steps:
  1. Check that all cables are correct and securely connected.
  2. Make sure USB device's power is turned on.
  3. Make sure the devices are getting enough power they require.
  4. Make sure there is no problem with the card installation.
- Computer failed to start after inserting the USB 3.0 PCI Express card.

Turn off the computer, remove the USB 3.0 PCI Express Card, and try to restart the computer. If the computer starts successfully, it means that the card has not been inserted into the PCI Express slot correctly. Please clean the gold contact on the card and change it to another PCI Express slot.

- What to do if you encounter a yellow exclamation mark on the controller in the device manager?



1. Please shutdown your computer and move the card to another available slot then re-install USB 3.0 driver.
  2. Please point to this device then right-click on the mouse. Selecting “**Update Driver**” to renew the USB driver.
  3. This exclamation mark usually means there is a resource conflict between this card and another card in your system. By moving the card to another available slot the system will re-configure itself and re-assign the needed resources. After the system has restarted, please check the device manager again.
- A message is displayed stating that not enough power can be given to the connected device.

Make sure to connect the 4-pin power connector to the system power supply; (if your power supply is using SATA power, please use the provided 4pin molex to SATA power converter cable) to provide sufficient power to the USB devices.

- Is it possible to connect current USB 1.1 or 2.0 devices to the USB 3.0 PCI Express card?

Yes it will work correctly, but the device will not be performing at the USB 3.0 speed.

# Artisan Technology Group is an independent supplier of quality pre-owned equipment

## Gold-standard solutions

Extend the life of your critical industrial, commercial, and military systems with our superior service and support.

## We buy equipment

Planning to upgrade your current equipment? Have surplus equipment taking up shelf space? We'll give it a new home.

## Learn more!

Visit us at [artisanng.com](https://www.artisanng.com) for more info on price quotes, drivers, technical specifications, manuals, and documentation.

Artisan Scientific Corporation dba Artisan Technology Group is not an affiliate, representative, or authorized distributor for any manufacturer listed herein.

**We're here to make your life easier. How can we help you today?**

(217) 352-9330 | [sales@artisanng.com](mailto:sales@artisanng.com) | [artisanng.com](https://www.artisanng.com)

